

Installation instruction BIM-connect

1	General:.....	2
2	Installing the software BIM-connect:.....	2
3	License to use BIM-connect.....	5
4	Remove installation.....	6
5	Help requests and error notifications.....	6

1 General:

This installation manual describes how BIM-connect is installed.

BIM-connect is workstation-based software, which can be used as an add-in within Revit from Autodesk.

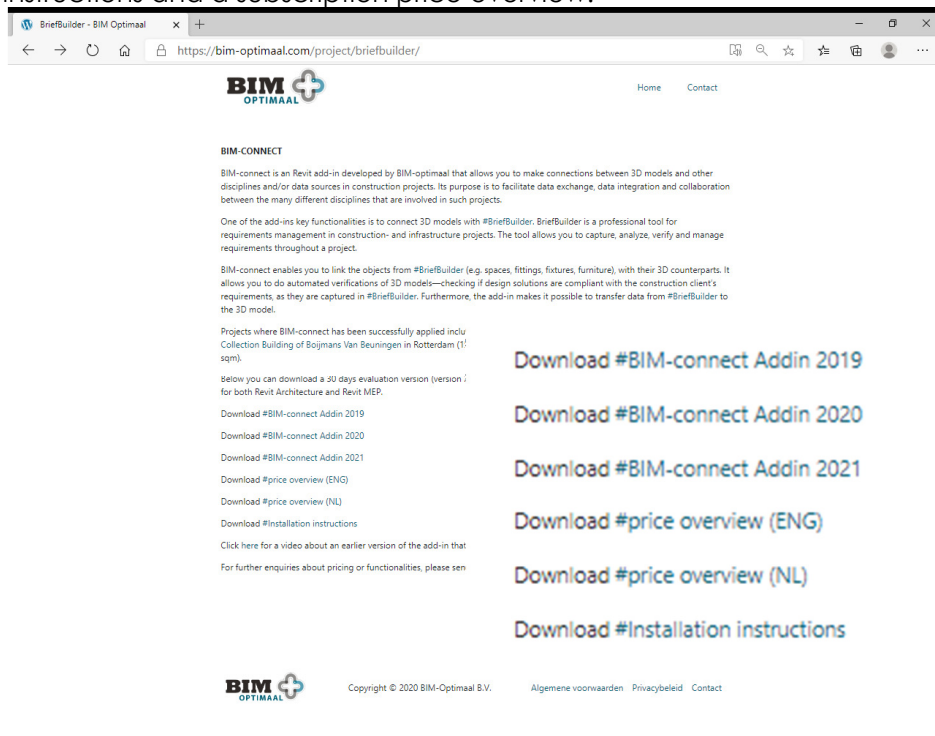
It is offered for installation in an .exe file which can be downloaded from the BIM-optimaal site, the developer of the add-in.

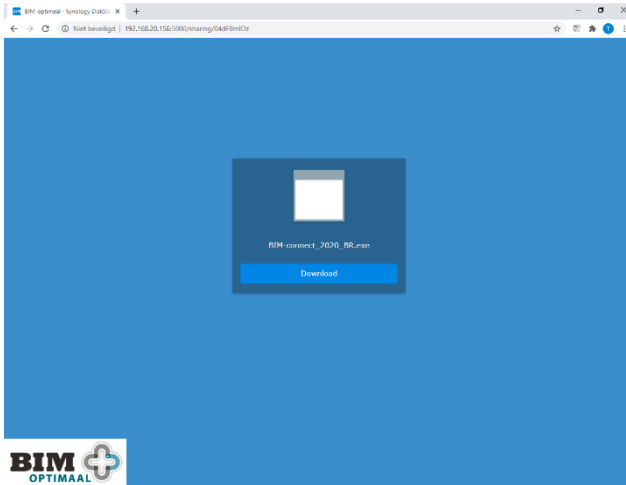
After initial installation, BIM-connect can be used for 30 days as an evaluation version. After this period, a license file is required for the use of BIM-connect.

2 Installing the software BIM-connect:

BIM-connect can be obtained from the download page of BIM-optimaal. BIM-connect is supplied for the three most recent Revit versions. In addition to the software, this also contains the installation instructions and documents with possible subscriptions.

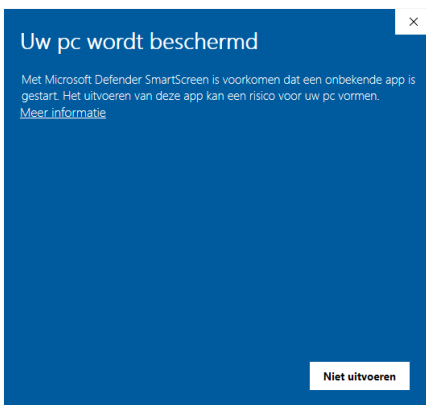
Above the download links are shown, including links for the installation instructions and a subscription price overview.



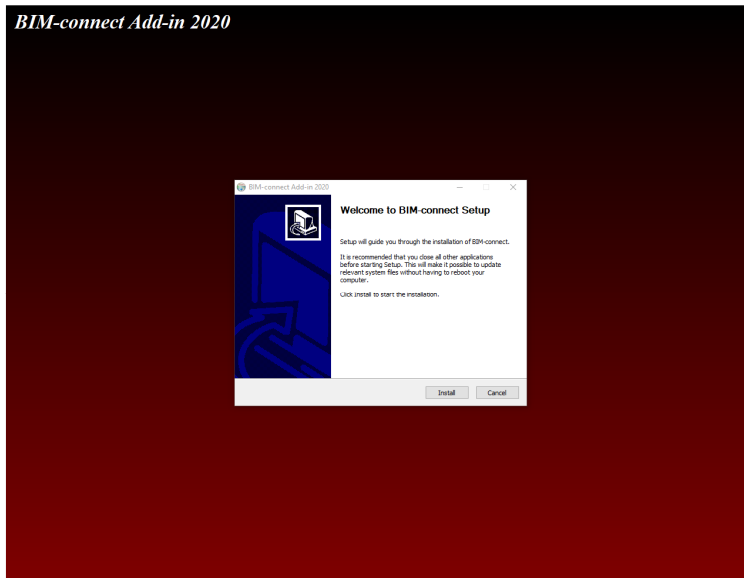


After activating the download link, the screen above will appear. The downloaded version will be placed in: ..\Users\\Downloads After downloading the .exe file can be activated for installation.

Note: Windows may show some security screens like below. The installation will start with the correct input.



The installation wizard will be displayed. After going through this, the software is installed.



Installing the software BIM-connect will create folders and add files on the workstation at:

1: The program:

C:\Users\

2: The add-in file:

C:\Users\

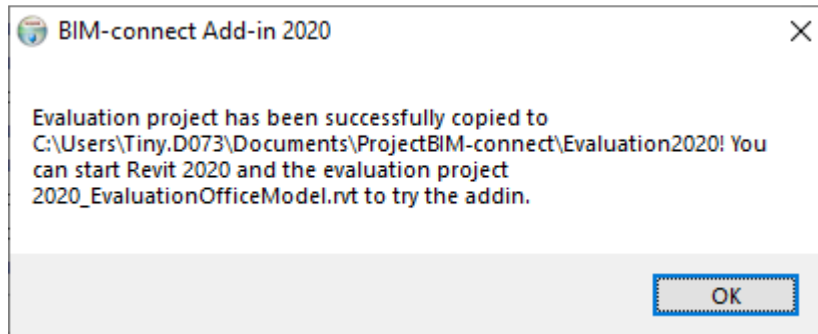
3: The settings/log/backup folders:

C:\Users\

4: The evaluation projects:

C:\Users\

At the end of the installation the screen below will be shown. This indicates the location where the evaluation models are located.



The BIM-connect icons can be found under the add-in tab within Revit. Here you can also find a guide for using the add-in within Revit.

3 License to use BIM-connect

If you want to continue using BIM-connect after the evaluation period, you can contact ICOP or BIM-optimaal to obtain a license file. This file is tailored to project(s) in Briefbuilder.

The license file can be obtained by contacting:

BriefBuilder
Kipstraat 7c
3011 RR ROTTERDAM - NL
+31(0)10 870 19 22
info@briefbuilder.com
www.briefbuilder.com

BIM-optimaal
Tramkade 26
5211 VB 's-Hertogenbosch -NL
tel +31 73 658 7075
support@BIM-connect.com
www.BIM-optimaal.com

The license file will be sent by email as link.
By downloading and install the License.exe in the same way as the BIM-connect software itself, BIM-connect is ready for use again.

Example link
<http://gofile.me/4azf9/1adtzqaHP>

Example license file:
BIM-connect_License_2020.exe

4 Remove installation

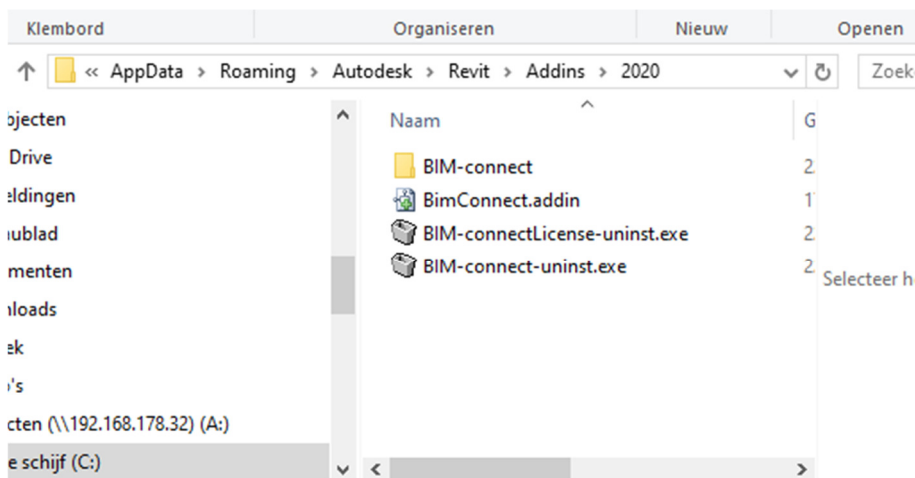
An uninstall program is included to remove the BIM-connect software from the workstation.

After installation of BIM-connect it can be found in folder:

C:\Users\

name>\AppData\Roaming\Autodesk\Revit\Addins\

The software can be removed by activating this program.



5 Help requests and error notifications

When users want to do help requests or error notifications, these can be sent to email address support@BIM-connect.com or call +31 (0) 73 658 70 75